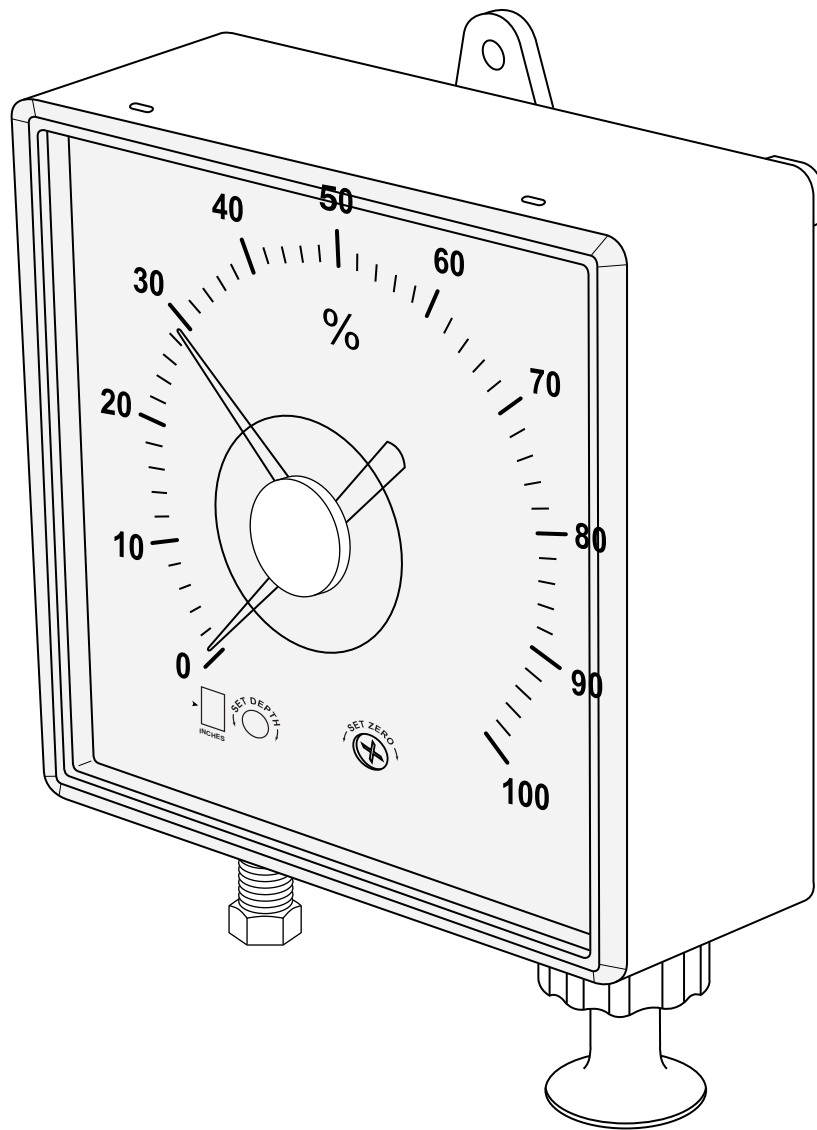
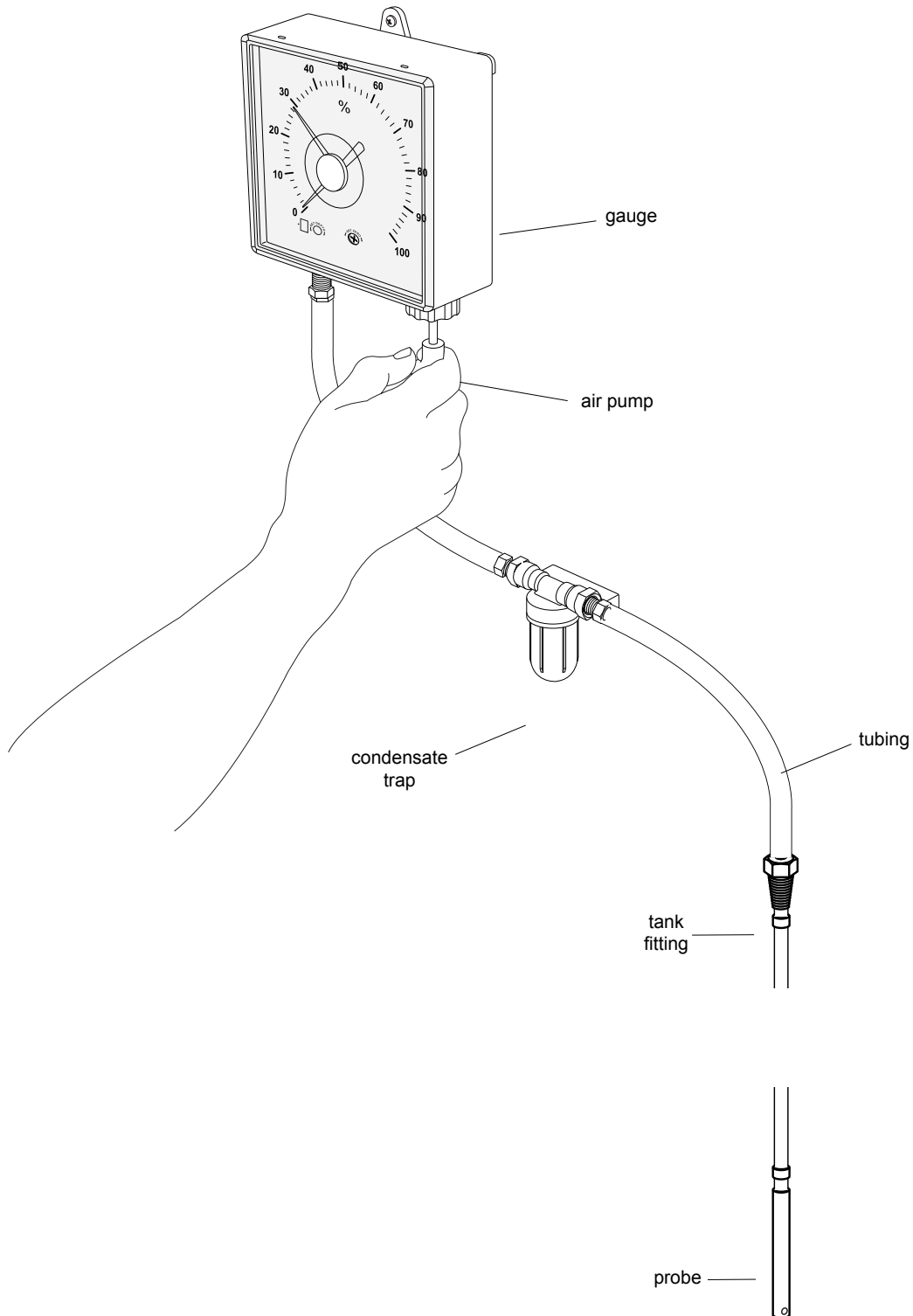


# Pneumatic Water Level Indicator



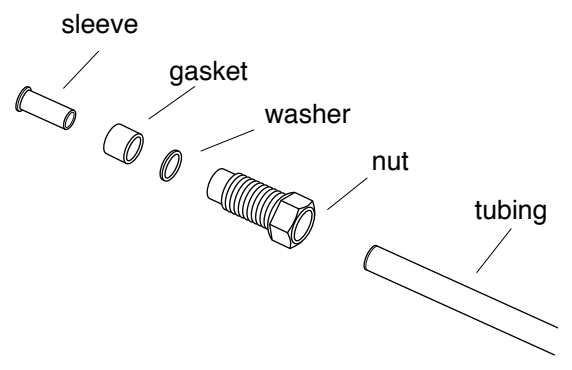
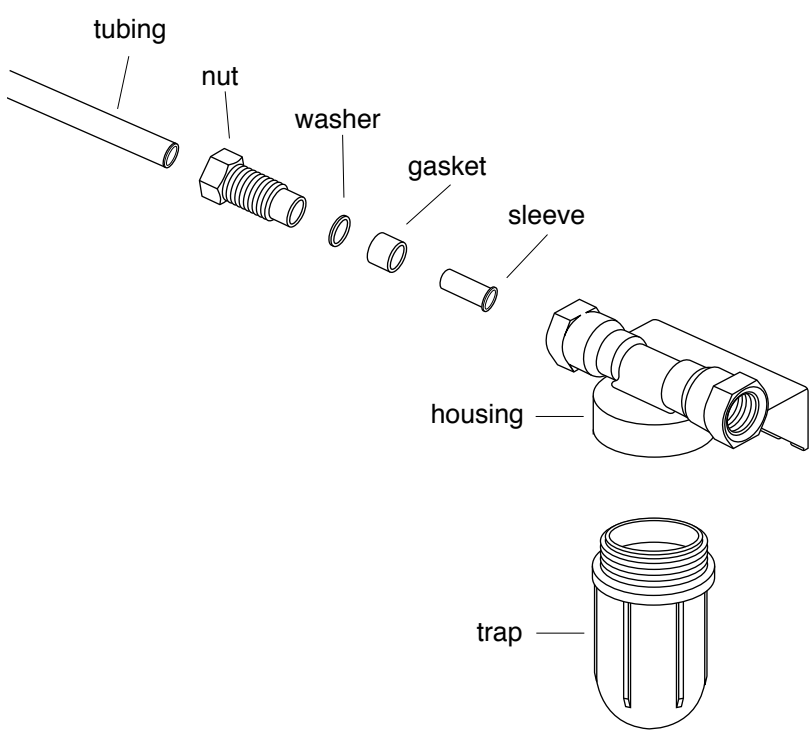
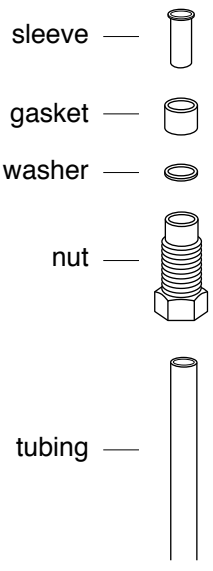
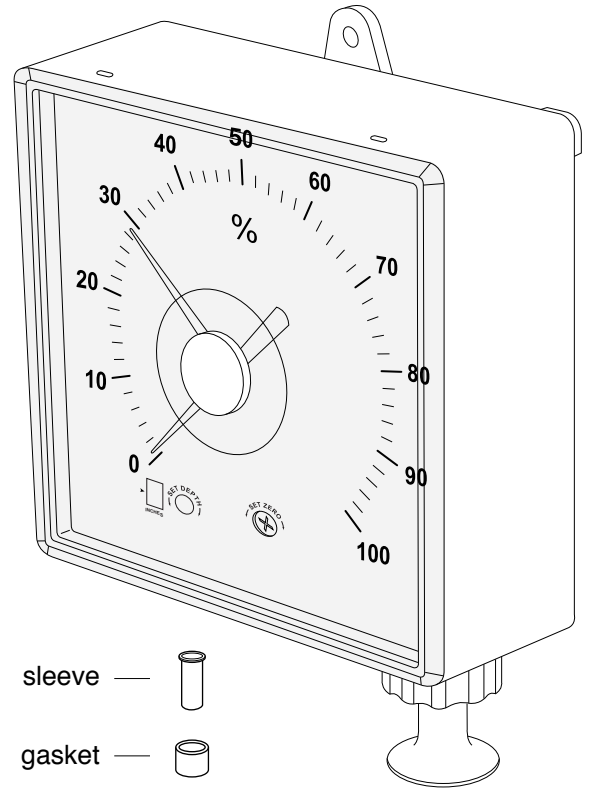
**OPERATION:** The *Pneumatic Water Level Indicator* accurately displays the water level in a tank by measuring water pressure. We supply a kit consisting of a dial gauge, a tank probe, a condensate trap, 100 feet of small-diameter hose, and all of the fittings to connect everything together. The dial gauge must be mounted in a dry location, calibrated to the tank depth, and zeroed. Pulling a knob at the bottom of the gauge operates an internal air pump that clears any water in the hose and the tank probe. The water in the tank then exerts pressure on the air within the hose and probe in proportion to the water depth, which is displayed on the gauge. This device can measure in tight spaces such as rainbarrels, standpipes, and modular tanks where electronic devices require expensive pressure sensors to give accurate measurements. The gauge is designed for tanks holding up to 8'-4" of water and displays percent full from 0 to 100%.



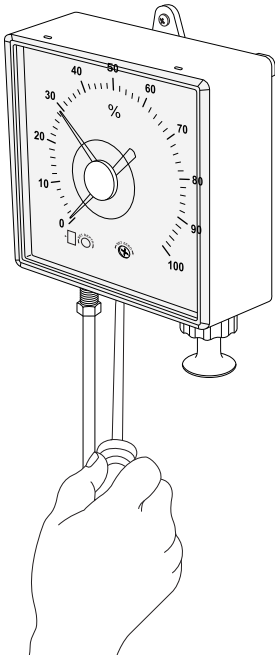
**INSTALLING THE PROBE:** Drill a 3/8" hole in the tank, pass the probe and rubber tubing through the hole and twist in the brass threaded fitting using a wrench. Excess tubing can lay on the tank bottom. Push the plastic tubing onto the brass barb and run the tubing into the building where the gauge will be mounted.

**INSTALLING THE GAUGE:** The gauge must be mounted in a dry interior space that does not freeze. Screw the gauge to a vertical surface with the screws provided: take care not to overtighten and crack the plastic tabs. Then secure the tubing to the bottom fitting as shown: insert the sleeve inside the end of the tubing, pass the tubing through the nut, slide a washer and gasket over the tubing, and thread the nut into the fitting at the bottom of the gauge.

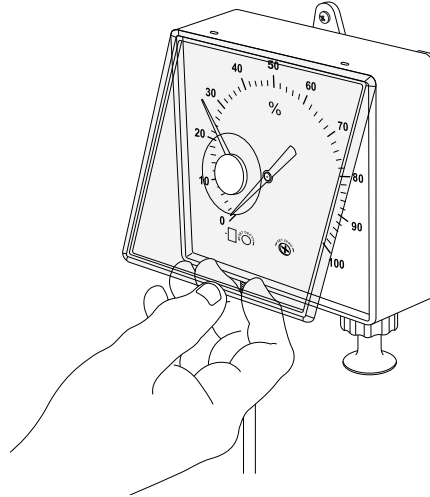
**INSTALLING THE CONDENSATE TRAP:** The condensate trap prevents water that condenses in the tubing from reaching the gauge where it could damage the gauge mechanism. This means it must be mounted below the gauge and emptied before it becomes full. Screw the housing to a vertical surface with the screws provided: take care not to overtighten and crack the plastic housing. Then secure the tubing to each side of the housing as shown: insert the sleeve inside the end of the tubing, pass the tubing through the nut, slide a washer and gasket over the tubing, and thread the nut into the housing.



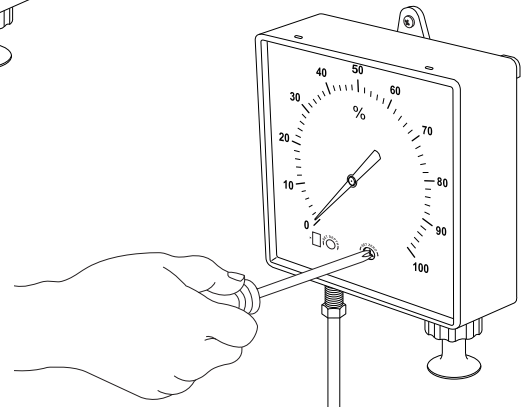
**CALIBRATION:** The Pneumatic Water Level Indicator must be installed indoors where it will not be exposed to water or cold temperatures. Fasten the display box to a wall or other vertical surface using the screws provided, but be careful not to crack the plastic by overtightening.



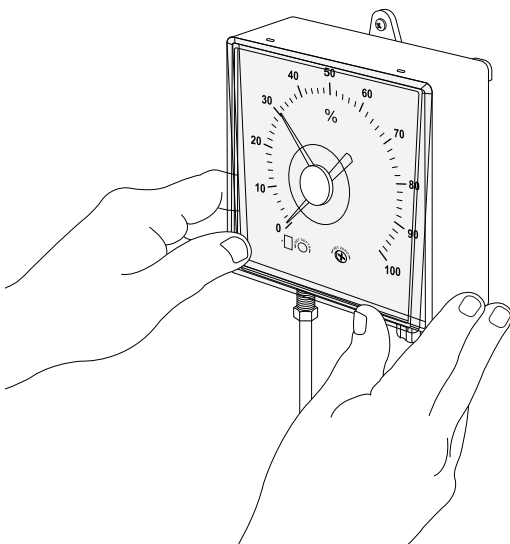
STEP 1. Pop up the cover by pressing a narrow, flat-blade screwdriver through the slot at the bottom of the clear plastic. Do not pry the cover!



STEP 2: Lift the cover and remove it.



STEP 3. Using a phillips screwdriver, turn the Zero screw to set the pointer to 0.



STEP 4. Using a narrow flat-blade screwdriver, turn the Depth screw to set maximum depth of water in the tank in inches.

STEP 5. Clip the cover into the top slots, pivot it down, and snap it closed.